

SHEET 6

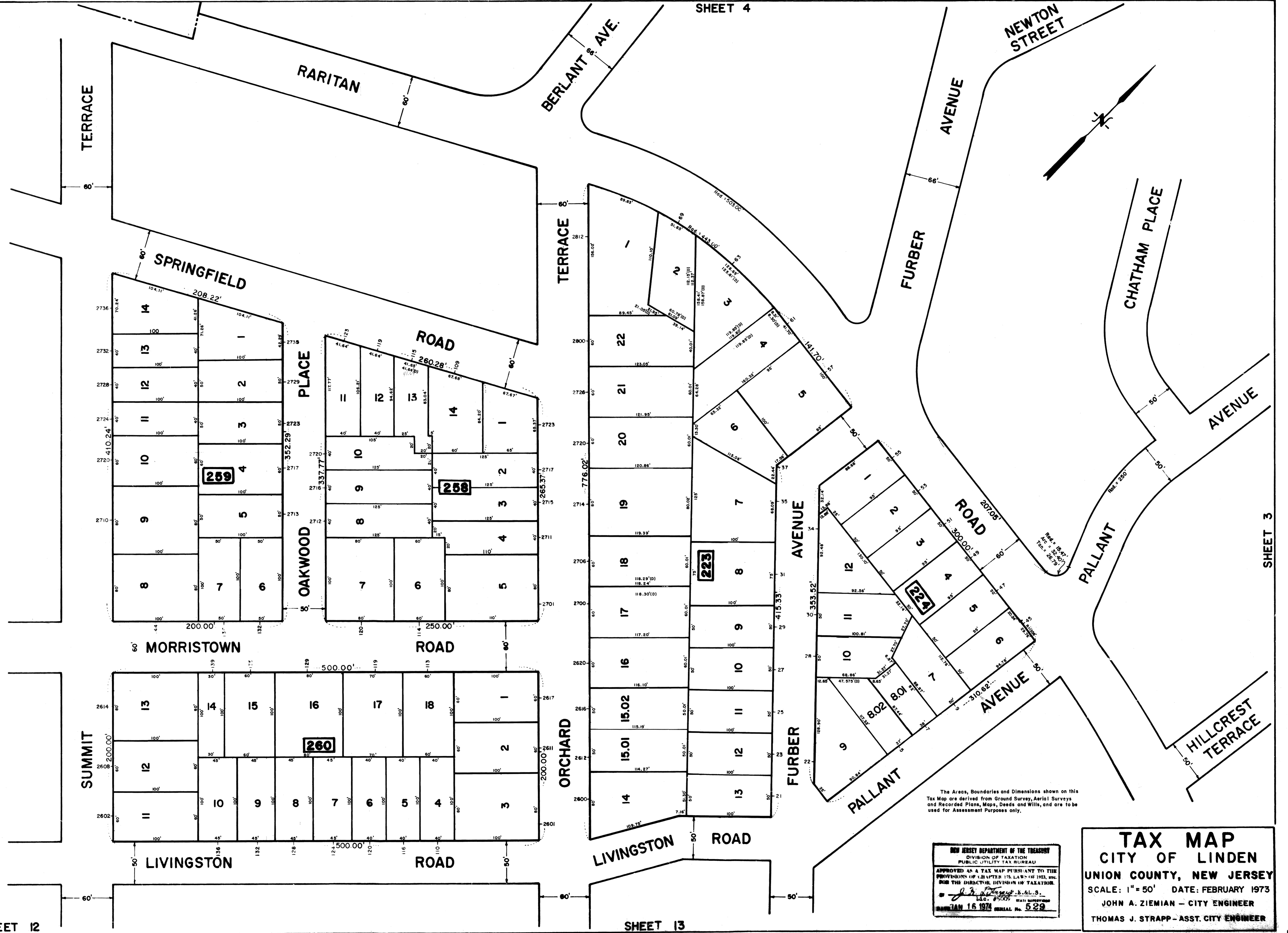
SHEET 4

SHEET 3

REV.	DATE	DESCRIPTION	BY
1	6/23/69	BLOCK 223 LOT 15	R.G.S.

SHEET 12

SHEET 13



The Areas, Boundaries and Dimensions shown on this Tax Map are derived from Ground Survey, Aerial Surveys and Recorded Plans, Maps, Deeds and Wills, and are to be used for Assessment Purposes only.

NEW JERSEY DEPARTMENT OF THE TREASURY
 DIVISION OF TAXATION
 PUBLIC UTILITY TAX BUREAU
 APPROVED AS A TAX MAP PURSUANT TO THE PROVISIONS OF L.B. 1175, L.A.S. 1175, BY THE DIRECTOR, DIVISION OF TAXATION.
John A. Ziemian & A.L.S.
 L.C. # 45005 STATE APPROVED
 JAN 16 1974 SERIAL NO. 529

TAX MAP
 CITY OF LINDEN
 UNION COUNTY, NEW JERSEY
 SCALE: 1" = 50' DATE: FEBRUARY 1973
 JOHN A. ZIEMIAN - CITY ENGINEER
 THOMAS J. STRAPP - ASST. CITY ENGINEER