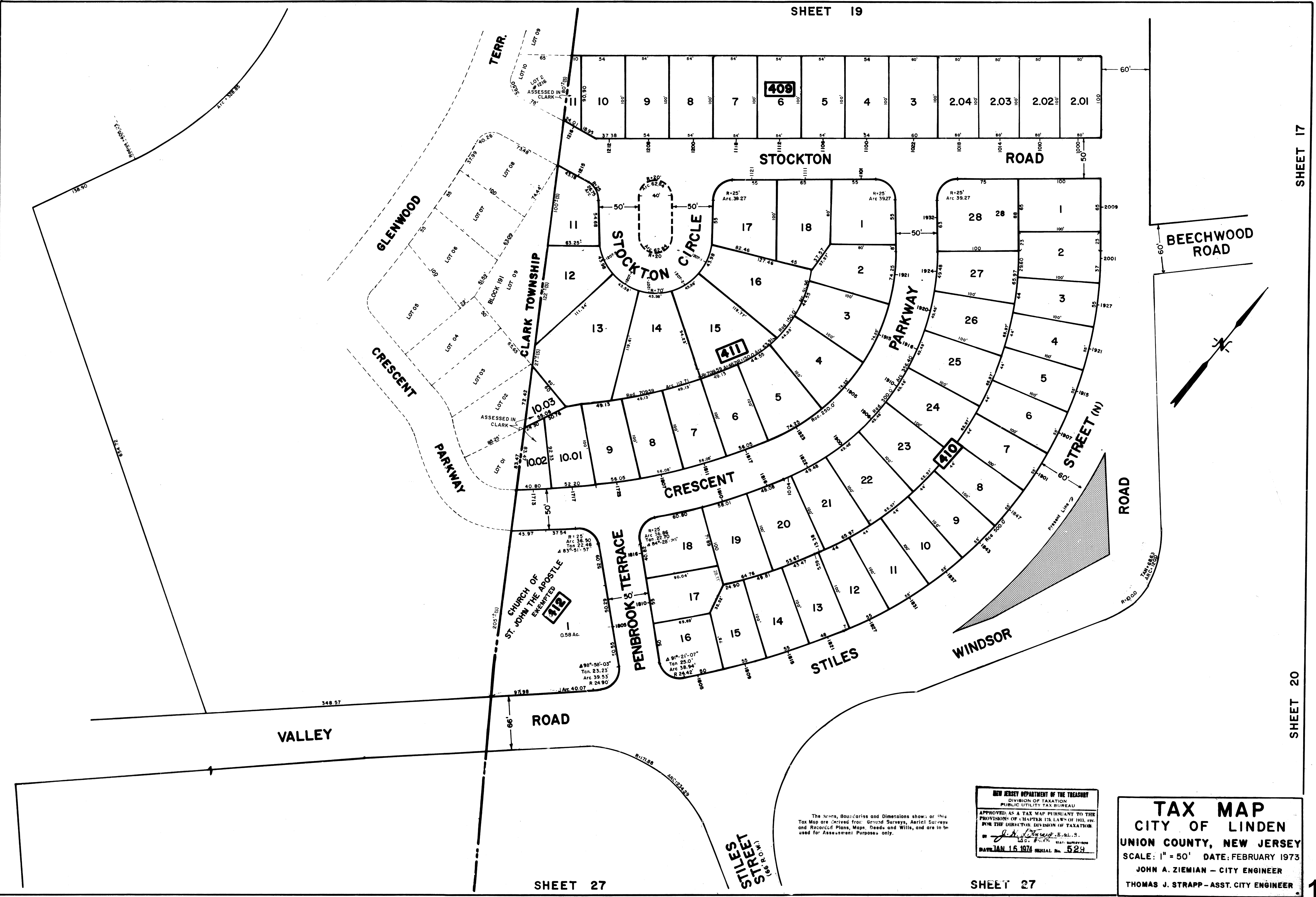


REV.	DATE	DESCRIPTION	BY



The Areas, Boundaries and Dimensions shown on this Tax Map are derived from: Ground Surveys, Aerial Surveys and Records of Plans, Maps, Deeds and Wills, and are to be used for Assessment Purposes only.

NEW JERSEY DEPARTMENT OF THE TREASURY
 DIVISION OF TAXATION
 PUBLIC UTILITY TAX BUREAU
 APPROVED AS A TAX MAP PURSUANT TO THE PROVISIONS OF CHAPTER 128, LAWS OF 1911, FOR THE DIRECTOR, DIVISION OF TAXATION.
 BY *J. H. Strapp*, S.E., S.
 DATE: JAN. 15 1974 SERIAL No. 529

TAX MAP
 CITY OF LINDEN
 UNION COUNTY, NEW JERSEY
 SCALE: 1" = 50' DATE: FEBRUARY 1973
 JOHN A. ZIEMIAN - CITY ENGINEER
 THOMAS J. STRAPP - ASST. CITY ENGINEER