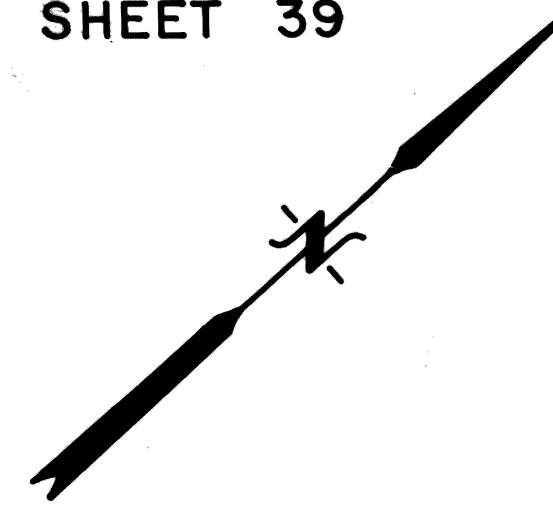


SHEET 39



STREET

DEWITT STREET

STREET

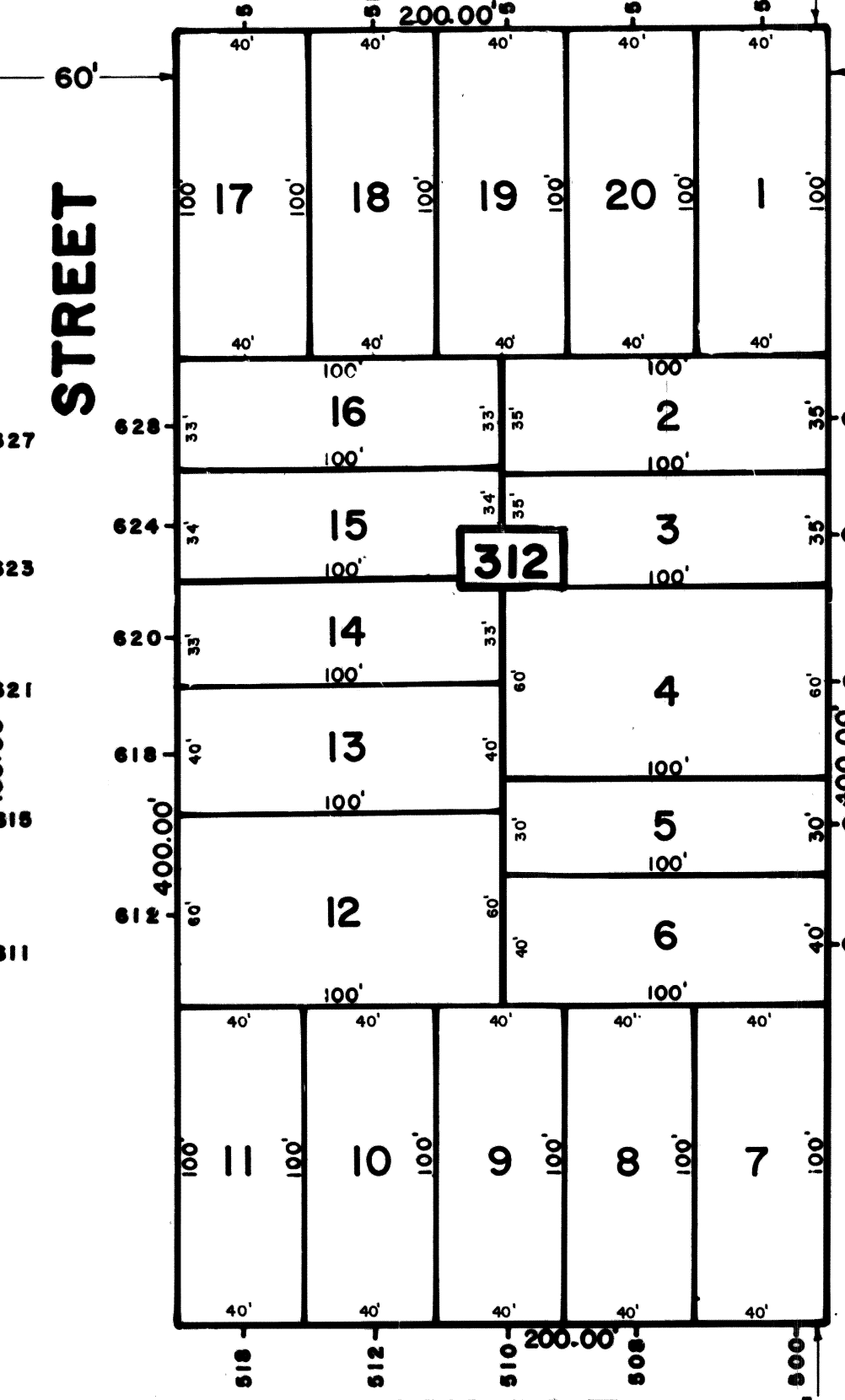
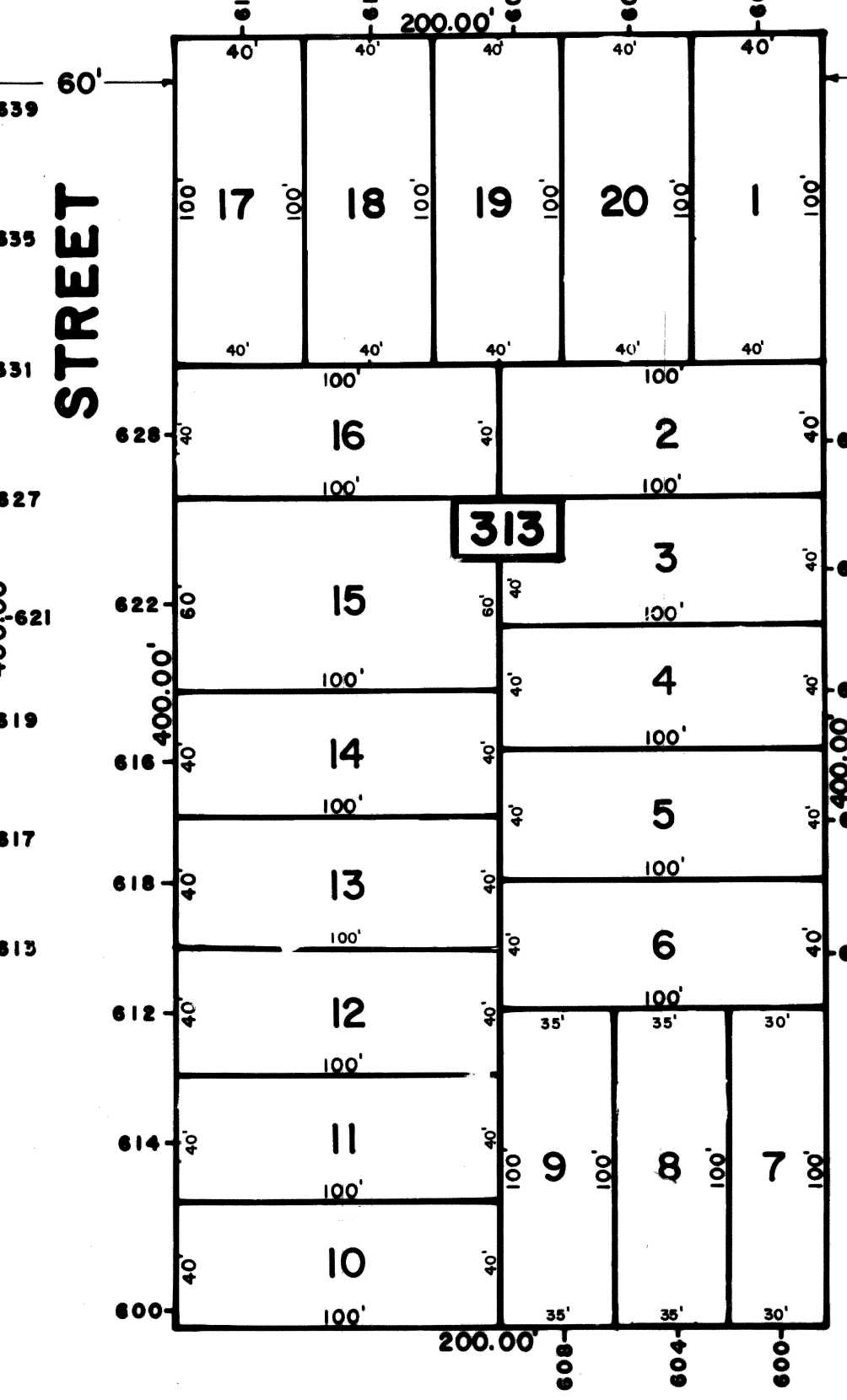
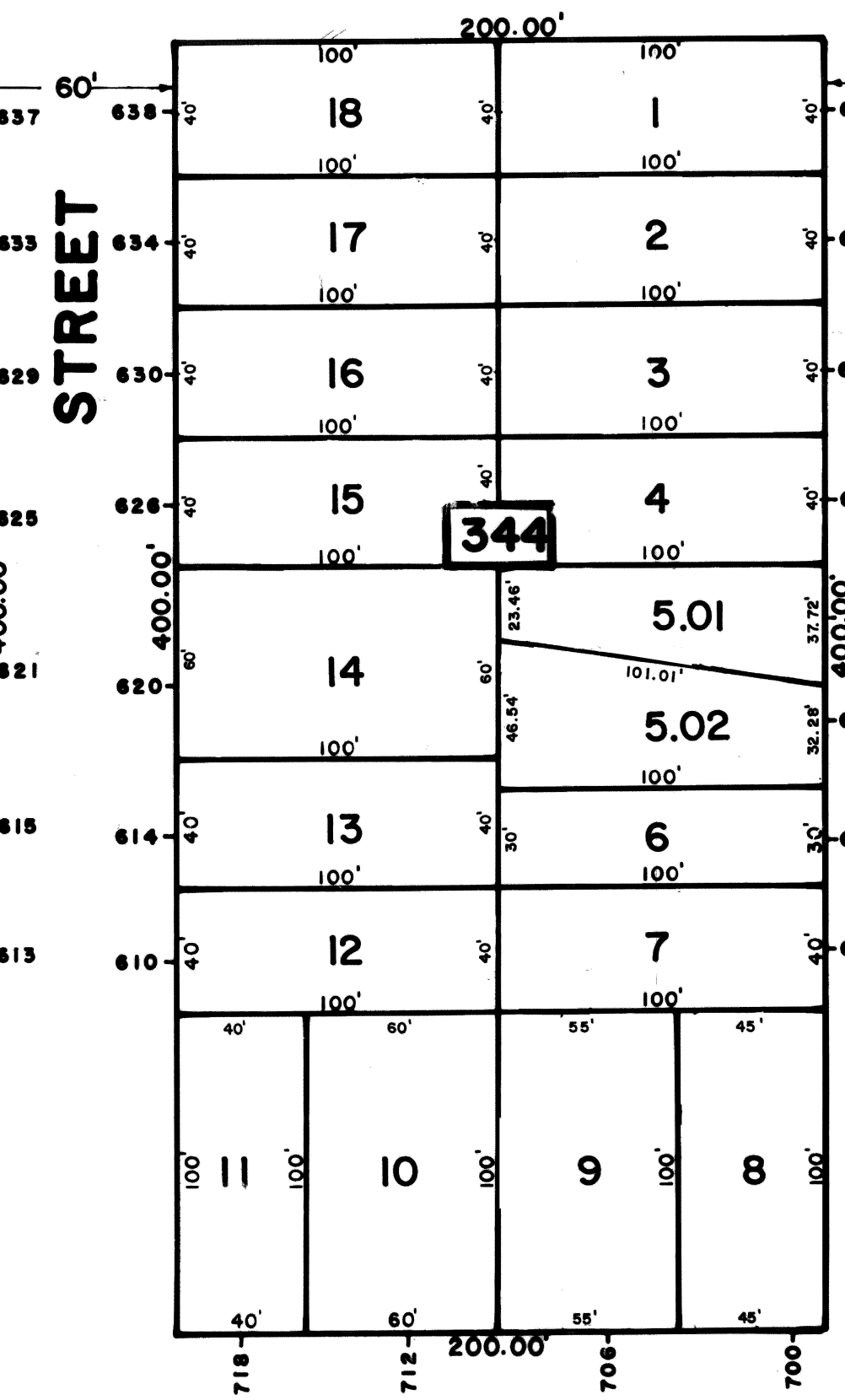
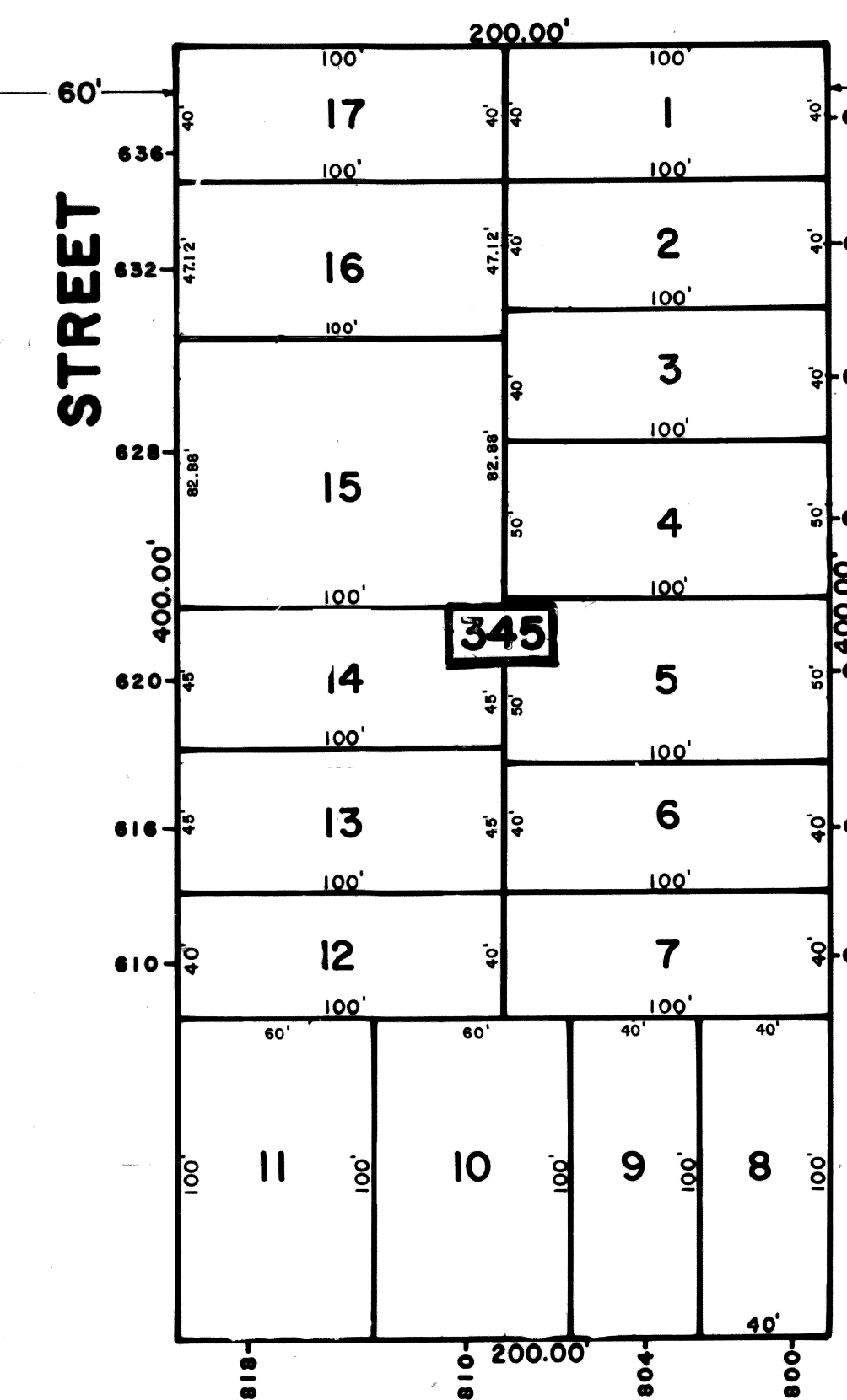
STREET

SUMMIT STREET

CURTIS STREET

STREET

SHEET 37



SHEET 43

HENRY STREET

STREET

LINDEGAR STREET

LAURITA STREET

MILTONIA STREET

DEWITT STREET

LAFAYETTE STREET

SPRUCE STREET

SHEET 52

The areas, boundaries and dimensions shown on this Tax Map are derived from Ground Surveys, Aerial Surveys and Recorded Plans, Maps, Deeds and Wills, and are to be used for Assessment Purposes only.

NEW JERSEY DEPARTMENT OF THE TREASURY
 DIVISION OF TAXATION
 PUBLIC UTILITY TAX BUREAU

APPROVED AS A TAX MAP PURSUANT TO THE PROVISIONS OF CHAPTER 125, LAWS OF 1981, P.L. 1981-101 FOR THE DIRECTOR, DIVISION OF TAXATION

DATE: JAN 16 1974 SERIAL NO. 529

TAX MAP
 CITY OF LINDEN
 UNION COUNTY, NEW JERSEY
 SCALE: 1" = 50' DATE: MARCH 1973
 JOHN A. ZIEMIAN - CITY ENGINEER
 THOMAS J. STRAPP - ASST. CITY ENGINEER

REV.	DATE	DESCRIPTION	BY