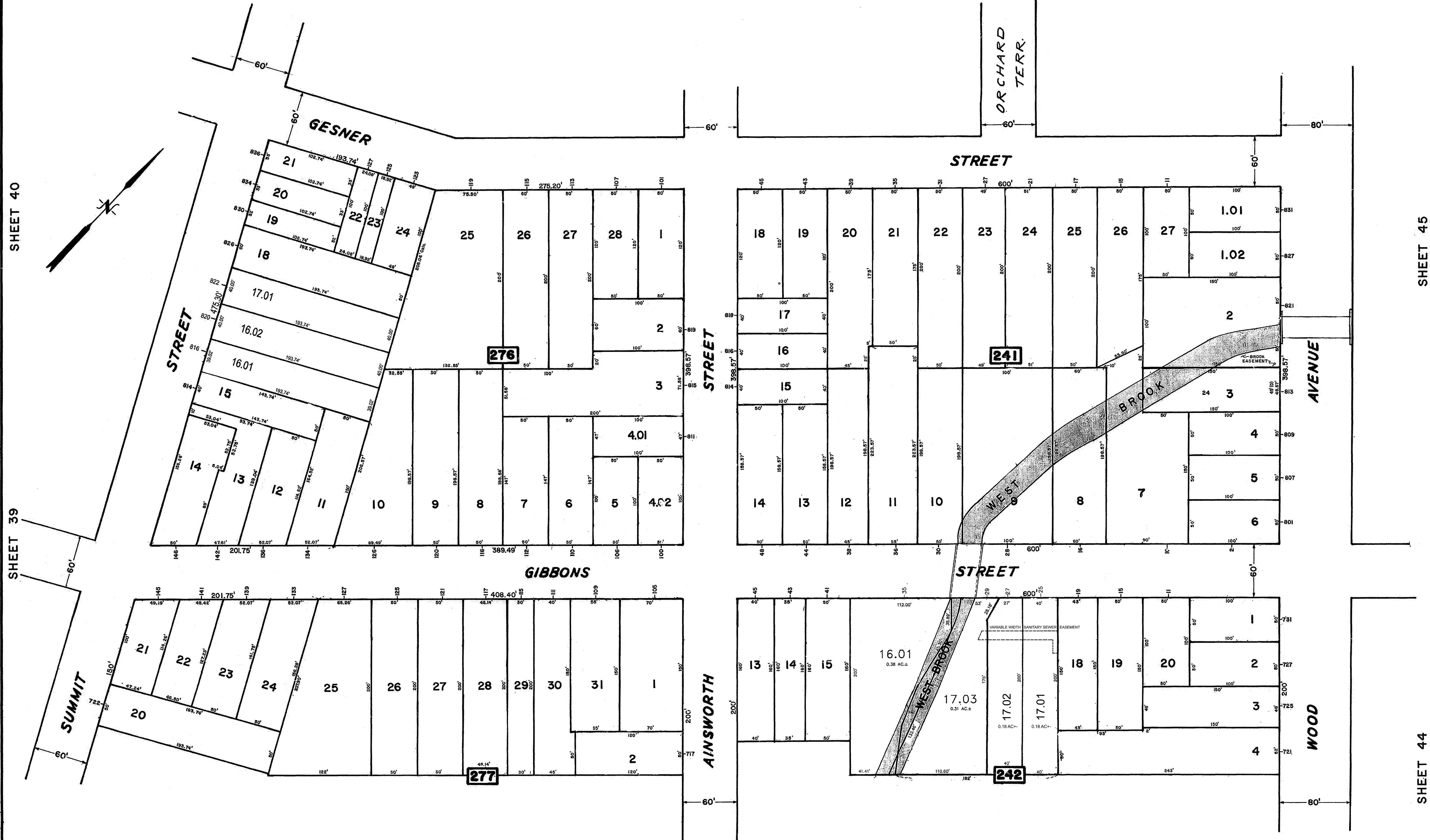


REV	DATE	DESCRIPTION	BY
7	1/19/2017	BLOCK 276 LOTS 16.01, 16.02 & 17.01 S.M.V.	
6	3/10/2016	BLOCK 276 LOTS 16.01, 16.02 AND 17.01 S.E.E.R.	
5	12/31/15	BLK. 242, LT. 17.01-17.03, 16.01	KRZ
4	5/8/09	BLOCK 277, LOT 23	KRZ
3	9/27/08	BLOCK 276 LOTS 16, 15	R.G.S.
2	5/14/91	BLOCK 241 LOTS 201 & 202	R.G.S.
1	1/5/91	BLOCK 241 LOTS 7, 02 & 26	R.G.S.



The Areas, Boundaries and Dimensions shown on this Tax Map are derived from Ground Surveys, Aerial Surveys and Recorded Plans, Maps, Deeds and Wills, and are to be used for Assessment Purposes only.

NEW JERSEY DEPARTMENT OF THE TREASURY
 DIVISION OF TAXATION
 PUBLIC UTILITY TAX BUREAU
 APPROVED AS A TAX MAP PURSUANT TO THE PROVISIONS OF CHAPTER 178, LAWS OF 1918, ETC. FROM THE DIRECTOR, DIVISION OF TAXATION.
J. H. ...
 DATE: JAN 16 1974 SERIAL NO. 529

TAX MAP
CITY OF LINDEN
 UNION COUNTY, NEW JERSEY
 SCALE: 1" = 50' DATE: MARCH 1973
 JOHN A. ZIEMIAN - CITY ENGINEER
 THOMAS J. STRAPP - ASST. CITY ENGINEER