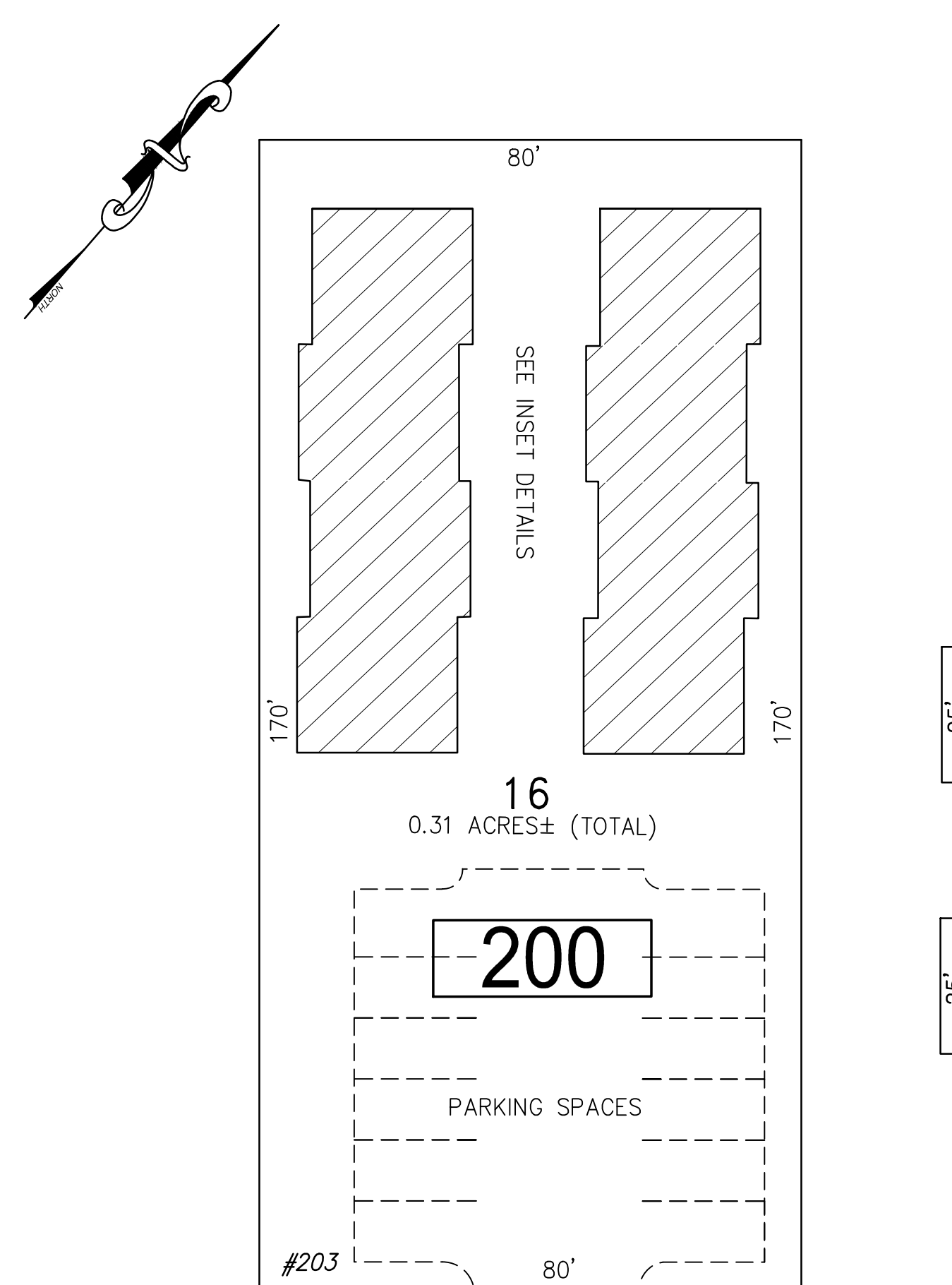


REVISIONS		
DATE	NAME	NO.

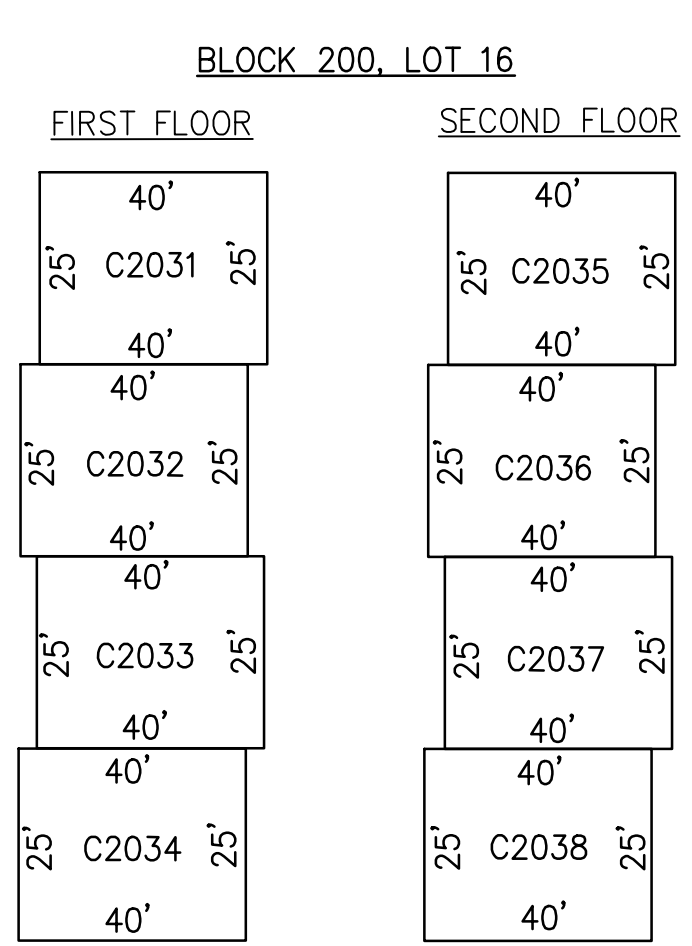
**NOTE:**  
THIS SHEET HAS BEEN DRAWN USING COMPUTER AIDED DRAFTING/DESIGN (CAD/D) AND COORDINATE GEOMETRY (COGO).



**EAST ELIZABETH AVENUE**  
(a.k.a. UNION COUNTY ROUTE 514)  
(66' R.O.W.)

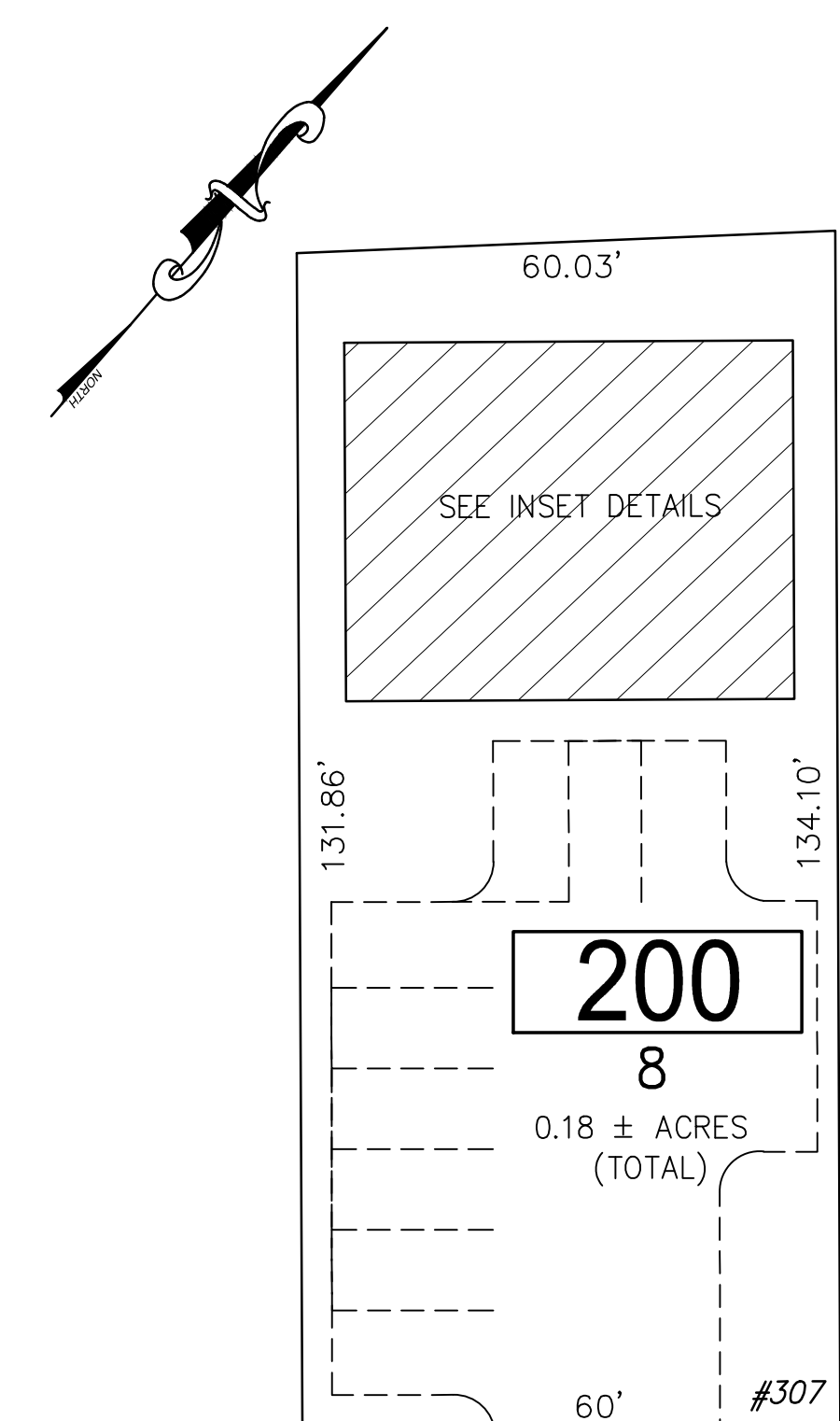
**PLAN**  
SCALE: 1"=20'

**BLOCK 200, LOT 16**  
**LINDEN GARDENS CONDOMINIUMS**  
**203 EAST ELIZABETH AVE**



**DETAILS**  
SCALE: 1"=20'

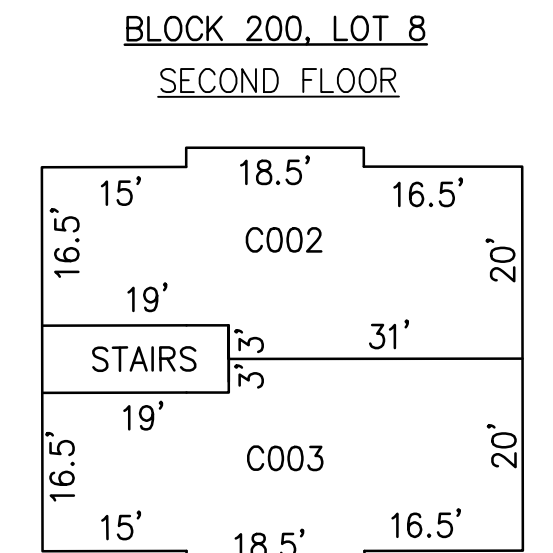
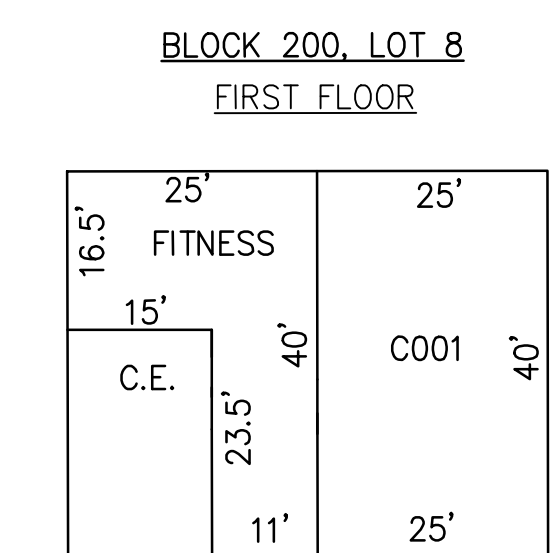
CONDO QUALIFIER	SQUARE FOOTAGE
C2031	1,000 SF.
C2032	1,000 SF.
C2033	1,000 SF.
C2034	1,000 SF.
C2035	1,000 SF.
C2036	1,000 SF.
C2037	1,000 SF.
C2038	1,000 SF.



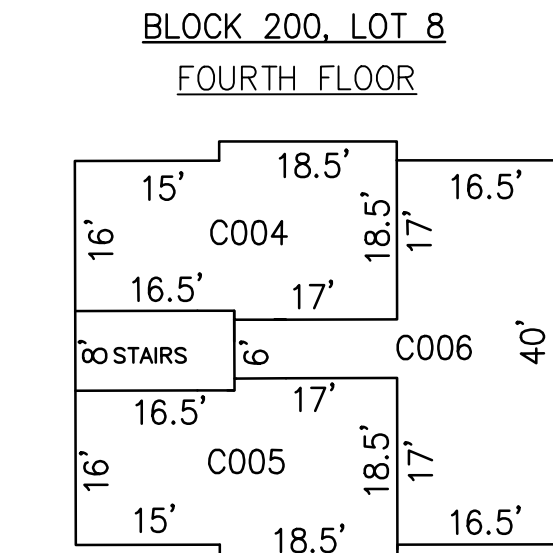
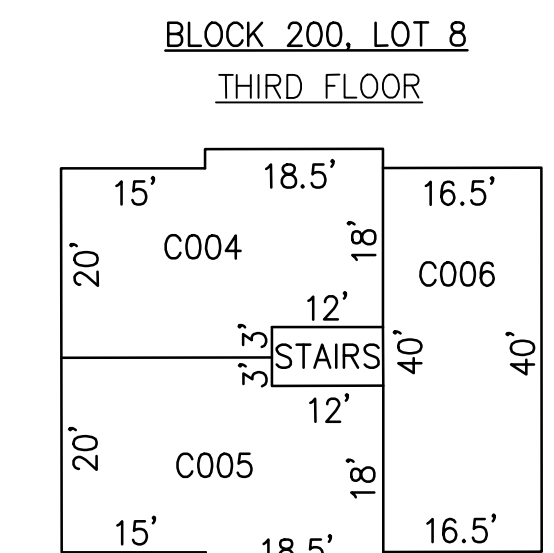
**EAST ELIZABETH AVENUE**  
(a.k.a. UNION COUNTY ROUTE 514)  
(66' R.O.W.)

**PLAN**  
SCALE: 1"=20'

**BLOCK 200, LOT 8**  
**CONDOMINIUMS**  
**307 EAST ELIZABETH AVE**



CONDO QUALIFIER	SQUARE FOOTAGE
C001	880 SF.
C002	912 SF.
C003	912 SF.
C004	1050 SF.
C005	1050 SF.
C006	1320 SF.



**DETAILS**  
SCALE: 1"=20'

BLOCK 200, LOT 16  
BLOCK 200, LOT 8  
SEE SHEET 59

**TAX MAP**  
**CITY OF LINDEN**

UNION COUNTY NEW JERSEY  
SCALE: NOTED DATE: 5-1-2018  
CHARLES E. ADAMSON N.J.P.L.S. LIC. NO. 42627



**REMINGTON & VERNICK ENGINEERS**  
ONE HARMON PLAZA, SUITE 210, SECAUCUS, NJ 07094  
(201) 624-2137, FAX (201) 624-2136, WEB SITE ADDRESS: WWW.RVE.COM  
Certificate of Authorization: 24 GA 28003300

—ENGINEERING EXCELLENCE—