

SHEET 62

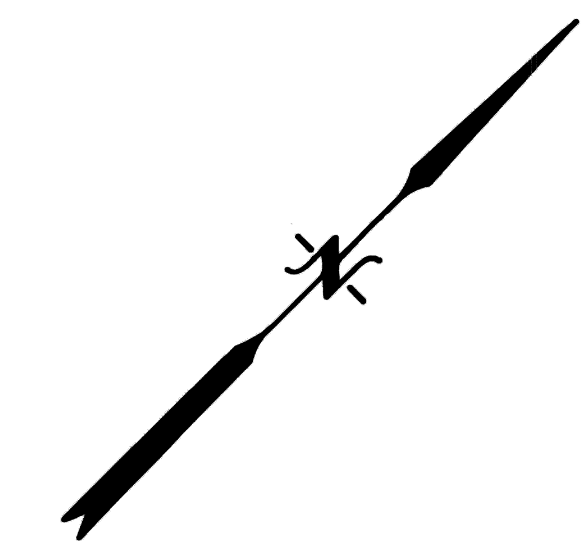
SHEET 63

SHEET 60

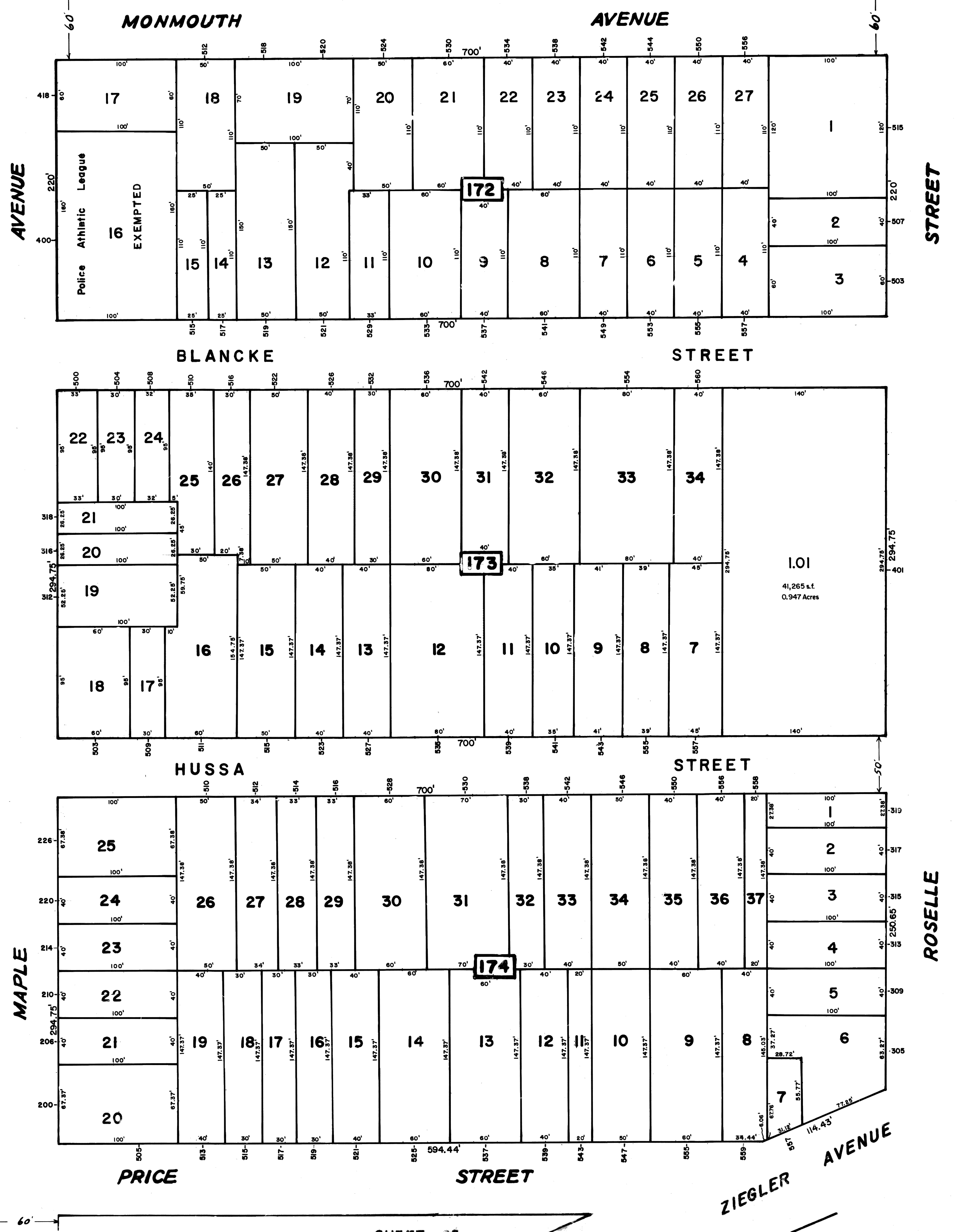
SHEET 59

SHEET 70

SHEET 68



REV.	DATE	DESCRIPTION	BY
1	1/18/07	BLOCK 173 LOTS 1,2,3,4,5,6,35	R.G.S.



The Area, Boundaries and Dimensions shown on this Tax Map are derived from Ground Surveys, Aerial Surveys and Recorded Plans, Maps, Deeds and Wills, and are to be used for Assessment Purposes only.

NEW JERSEY DEPARTMENT OF THE TREASURY  
 DIVISION OF TAXATION  
 PUBLIC UTILITY TAX BUREAU  
 APPROVED AS A TAX MAP PURSUANT TO THE PROVISIONS OF CHAPTER 175, L.A.S. 1974, INC. FOR THE DIRECTOR, DIVISION OF TAXATION.  
 BY *J. H. Strapp, P.E., S.E.*  
 DATE JAN 16 1974 SERIAL No. 529

**TAX MAP**  
 CITY OF LINDEN  
 UNION COUNTY, NEW JERSEY  
 SCALE: 1" = 50' DATE: MARCH 1973  
 JOHN A. ZIEMIAN - CITY ENGINEER  
 THOMAS J. STRAPP - ASST. CITY ENGINEER