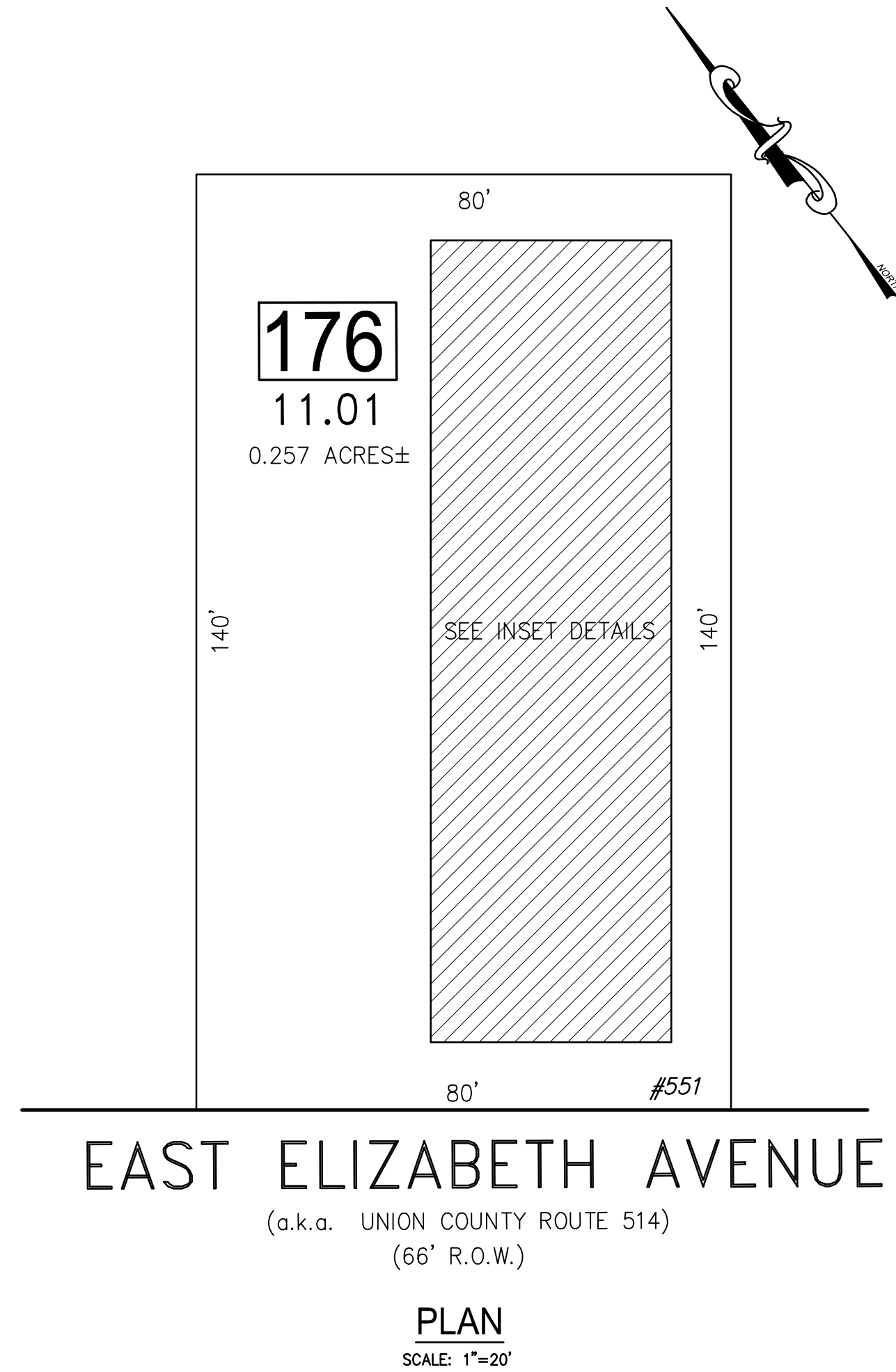
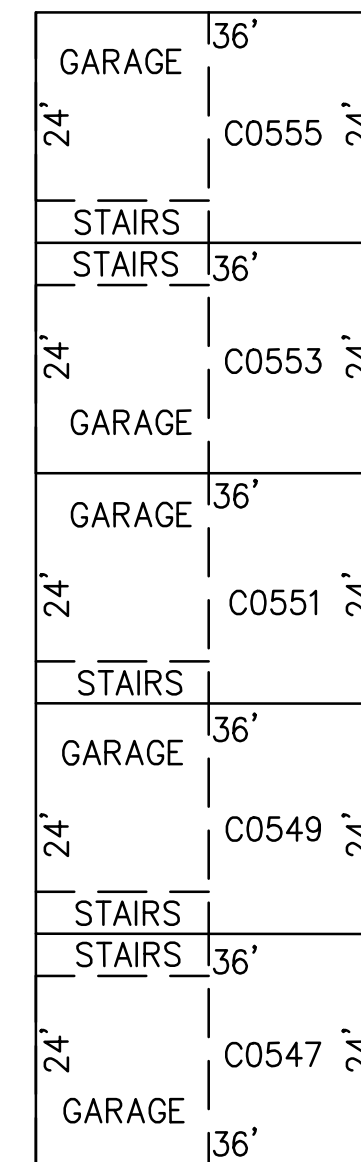


REVISIONS		
DATE	NAME	NO.

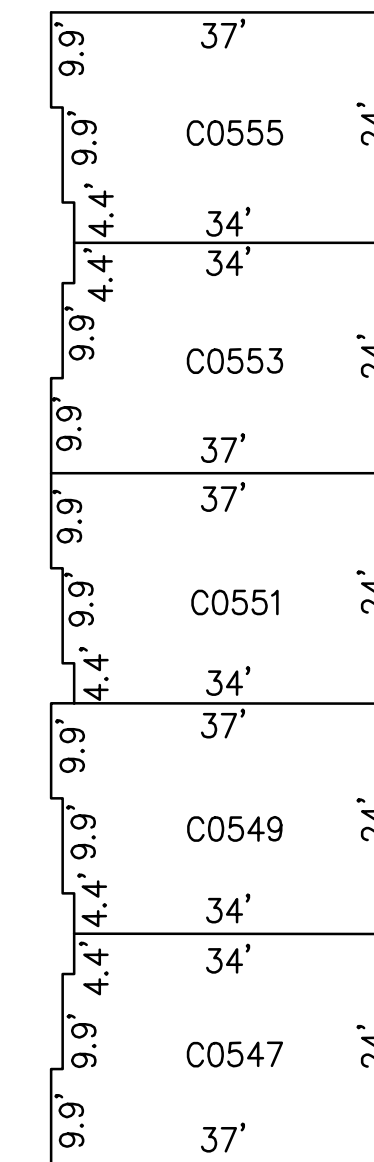
NOTE:
THIS SHEET HAS BEEN DRAWN USING COMPUTER AIDED DRAFTING/DESIGN (CAD/D) AND COORDINATE GEOMETRY (COGO).



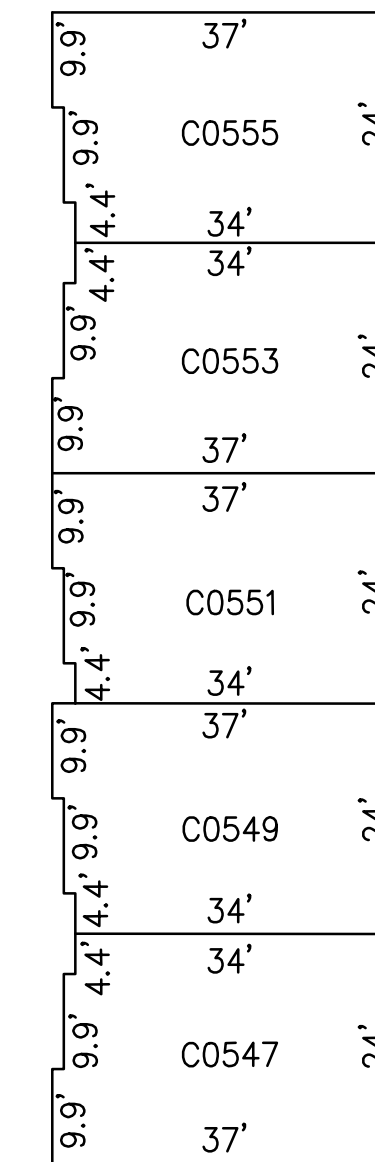
BLOCK 176, LOT 11.01
FIRST FLOOR



BLOCK 176, LOT 11.01
SECOND FLOOR



BLOCK 176, LOT 11.01
THIRD FLOOR



CONDO QUALIFIER	SQUARE FOOTAGE
C0555	864 S.F.
C0553	864 S.F.
C0551	864 S.F.
C0549	864 S.F.
C0547	864 S.F.

DETAILS
SCALE: 1"=20'

BLOCK 176, LOT 11.01
OLIVIA COMMONS CONDOMINIUM
551 EAST ELIZABETH AVE

BLOCK 176, LOT 11.01
SEE SHEET 65

TAX MAP
CITY OF LINDEN

UNION COUNTY NEW JERSEY
SCALE: NOTED DATE: 5-1-2018

CHARLES E. ADAMSON N.J.P.L.S. LIC. NO. 42627



REMINGTON & VERNICK ENGINEERS

ONE HARMON PLAZA, SUITE 210, SECAUCUS, NJ 07094
(201) 624-2137, FAX (201) 624-2136, WEB SITE ADDRESS: WWW.RVE.COM
Certificate of Authorization: 24 GA 28003300

—ENGINEERING EXCELLENCE—