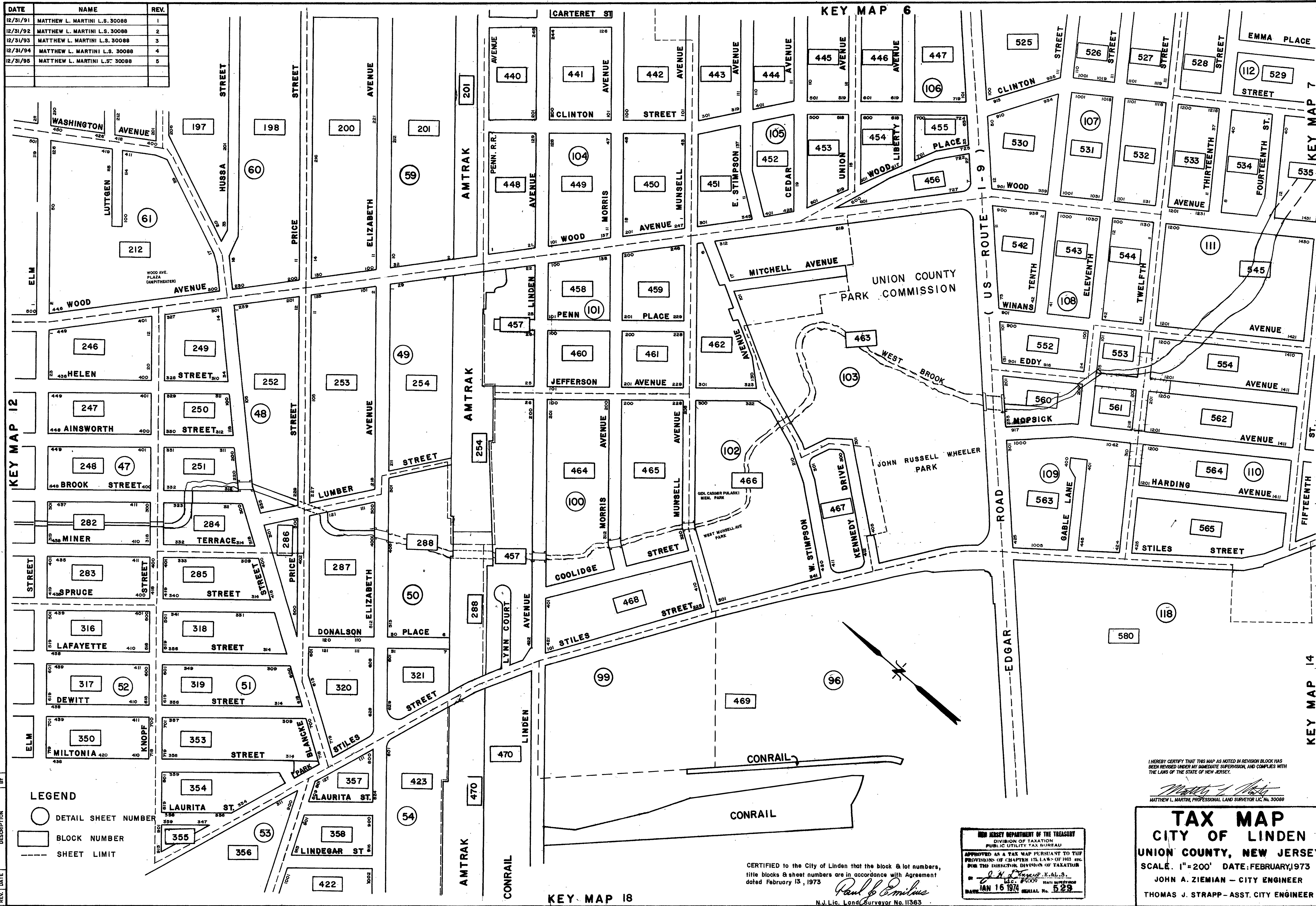


DATE	NAME	REV.
12/31/91	MATTHEW L. MARTINI L.S. 30088	1
12/31/92	MATTHEW L. MARTINI L.S. 30088	2
12/31/93	MATTHEW L. MARTINI L.S. 30088	3
12/31/94	MATTHEW L. MARTINI L.S. 30088	4
12/31/95	MATTHEW L. MARTINI L.S. 30088	5



REV.	DATE	DESCRIPTION	BY

LEGEND
 ○ DETAIL SHEET NUMBER
 □ BLOCK NUMBER
 - - - SHEET LIMIT

I HEREBY CERTIFY THAT THIS MAP AS NOTED BY REVISION BLOCK HAS BEEN REVISIONED UNDER MY IMMEDIATE SUPERVISION, AND COMPLIES WITH THE LAWS OF THE STATE OF NEW JERSEY.
 Matthew L. Martin
 MATTHEW L. MARTINI, PROFESSIONAL LAND SURVEYOR L.C. No. 30088

TAX MAP
 CITY OF LINDEN
 UNION COUNTY, NEW JERSEY
 SCALE: 1"=200' DATE: FEBRUARY, 1973
 JOHN A. ZIEMIAN - CITY ENGINEER
 THOMAS J. STRAPP - ASST. CITY ENGINEER

NEW JERSEY DEPARTMENT OF THE TREASURY
 DIVISION OF TAXATION
 PUBLIC UTILITY TAX BUREAU
 APPROVED AS A TAX MAP PURSUANT TO THE PROVISIONS OF CHAPTER 125, LAWS OF 1915 ETC. FROM THE DIRECTOR, DIVISION OF TAXATION
 Paul J. Emilius, L.L.S.
 L.C. #5009 STATE SUPERVISOR
 DATE: JAN 16 1974 SERIAL No. 529

CERTIFIED to the City of Linden that the block & lot numbers, title blocks & sheet numbers are in accordance with Agreement dated February 13, 1973
 Paul J. Emilius
 N.J. Lic. Land Surveyor No. 11363